

Launching the Consultation Process for
Vanuatu's
GCF Country Programme





GREEN
CLIMATE
FUND

What is a GCF Country Program?

Overarching objective: fosters country ownership

(driven by consultation)

1. Establishes clear and country-owned **priorities** that GCF can support
2. Includes a **pipeline of GCF projects** that the country would like to develop
3. Provides **guidance for projects** and programmes on how to be developed

http://bit.ly/2eQucPK

Secure | https://docs.google.com/forms/d/e/1FAIpQLSfL4sWuiZHxJ_-q2EOndvmVKtOJ65OWR6OdTKZJpezSMk-8ng/viewform



GREEN
CLIMATE
FUND



Vanuatu GCF Country Programme

GCF Country Programme will sit at the center of GCF investment in Vanuatu. This living document will facilitate the alignment of Vanuatu's programming priorities with the expertise and capabilities of the accredited entities.

Vanuatu's GCF Country Programme will present an overview of our national climate context, policy framework and plans (e.g. nationally determined contributions, national adaptation plans (NAPs), nationally appropriate mitigation actions (NAMAs), etc.), and summarize the climate action agendas.

Importantly, the Vanuatu GCF Country Programme will also include a pipeline of projects or programmes to undertake with the GCF, aligned to GCF strategic impacts, investment criteria and operational modalities.

* Required

Gender *

- Female
- Male
- Prefer to self-describe

What category best describes you? *

- Ni-Vanuatu? (Born in Vanuatu)
- Vanuatu Citizen
- Expatriate Resident



GREEN
CLIMATE
FUND

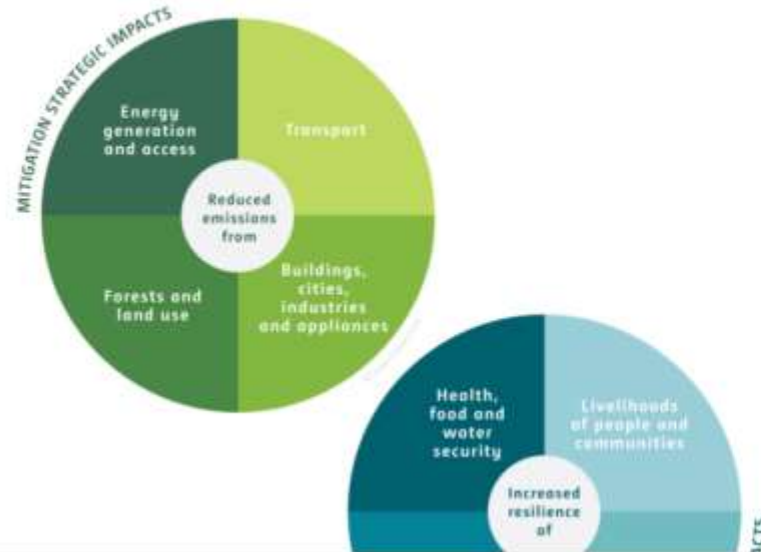


Vanuatu GCF Country Programme

* Required

GCF Investment Priorities for Vanuatu

For Vanuatu, which Strategic Impact Areas should receive priority GCF investment over the next 5 years? (Choose up to four only) *



Which **SECTORs**
should GCF
invest in?



GREEN
CLIMATE
FUND



What mix of **Adaptation versus Mitigation** for GCF in Vanuatu?

Vanuatu GCF Country Programme

* Required

Allocation of GCF Funds in Vanuatu Portfolio

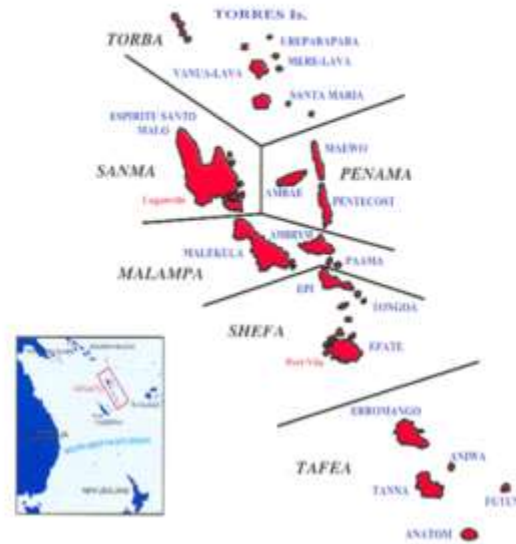
What percentage of GCF funds for Vanuatu should be allocated to Mitigation/Adaptation? *

Mitigation = efforts to reduce or prevent emission of greenhouse gases. Adaptation = actions taken to help communities and ecosystems cope with changing climate conditions.



Where should
GCF
investment in
Vanuatu be
targeted?

In your opinion, which Province is most in NEED of GCF Investment over the next 5 years? *



- TORBA
- SANMA
- PENAMA
- MALAMPA
- SHEFA
- TORBA

Why is this province most in need of GCF Investment? (Chose all that are relevant and/or add others) *

- Lack of current investment / projects

Who should
receive GCF
investment
Govt versus
Non-Govt?

http://bit.ly/2eQucPK

Secure | https://docs.google.com/forms/d/e/1FAIpQLSfL4sWuiZHxJ_-q2EOndvmVKtOJ65OWR6OdTKZJpezSMk-8ng/viewform



GREEN
CLIMATE
FUND



Vanuatu GCF Country Programme

GCF Country Programme will sit at the center of GCF investment in Vanuatu. This living document will facilitate the alignment of Vanuatu's programming priorities with the expertise and capabilities of the accredited entities.

Vanuatu's GCF Country Programme will present an overview of our national climate context, policy framework and plans (e.g. nationally determined contributions, national adaptation plans (NAPs), nationally appropriate mitigation actions (NAMAs), etc.), and summarize the climate action agendas.

Importantly, the Vanuatu GCF Country Programme will also include a pipeline of projects or programmes to undertake with the GCF, aligned to GCF strategic impacts, investment criteria and operational modalities.

* Required

Gender *

- Female
- Male
- Prefer to self-describe

What category best describes you? *

- Ni-Vanuatu? (Born in Vanuatu)
- Vanuatu Citizen
- Expatriate Resident

Next Steps



- Collect widespread responses to survey (September-November)
 - Parliamentarians
 - Traditional Authorities
 - National Government
 - Provincial Authorities
 - Private Sector
 - Civil Society / NGOs
 - Churches
 - Academia
 - Development Partners
 - Others
- Hold Validation workshop for consideration responses (November 2017)
- Draft GCF Country Programme (December 2017)
- Hold Validation of Vanuatu CP (May 2018)

Questions on
Country Program Survey Launch?

